

Women and Gambling-Related Harms Training

Rod Smith

Training Lead / Arweinydd Hyfforddiant

Women's Pathway / Llwybr Merched



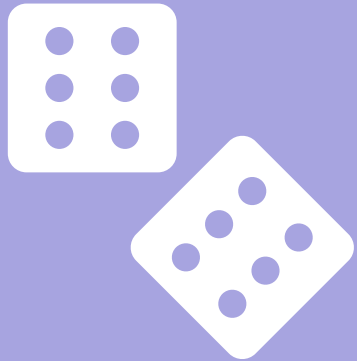
Insights

- 2.7% of the adult population in Great Britain scored 8+ on the Problem Gambling Severity Index.
- Stigma, shame and embarrassment are reasons why people, in particular women, do not speak about or seek support for gambling harm.
- Women's drivers for gambling can differ from men with women using gambling more to unwind, cope with stress/trauma or bond with others.
- 8.1% of adults in Great Britain are estimated to be affected by someone else's gambling with women more likely to be affected.

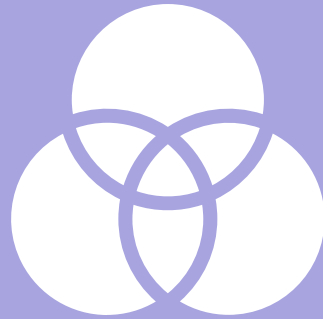


Free CPD Training session focus:

We cover three elements :



What harmful gambling looks like and where it sits on a 'gambling risk scale'

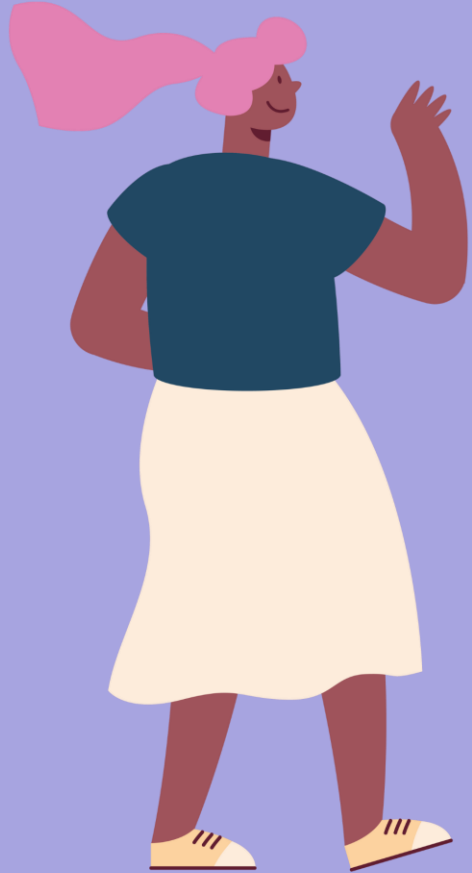


The impacts of harmful gambling on the person gambling and any affected others



What **you** can do to support **women** affected by gambling-related harm

Training session objectives:



- Understand what gambling harm is and its different forms.
- Recognise the risk factors and drivers to gambling harm.
- Know how to spot the signs of gambling harms.
- Understand the impacts of gambling harm for women who gamble or who are an affected other.
- Knowledge of referral pathways for help and support.

Way Forward

A supportive group for all women that are affected by someone else's gambling harm.

Session Information



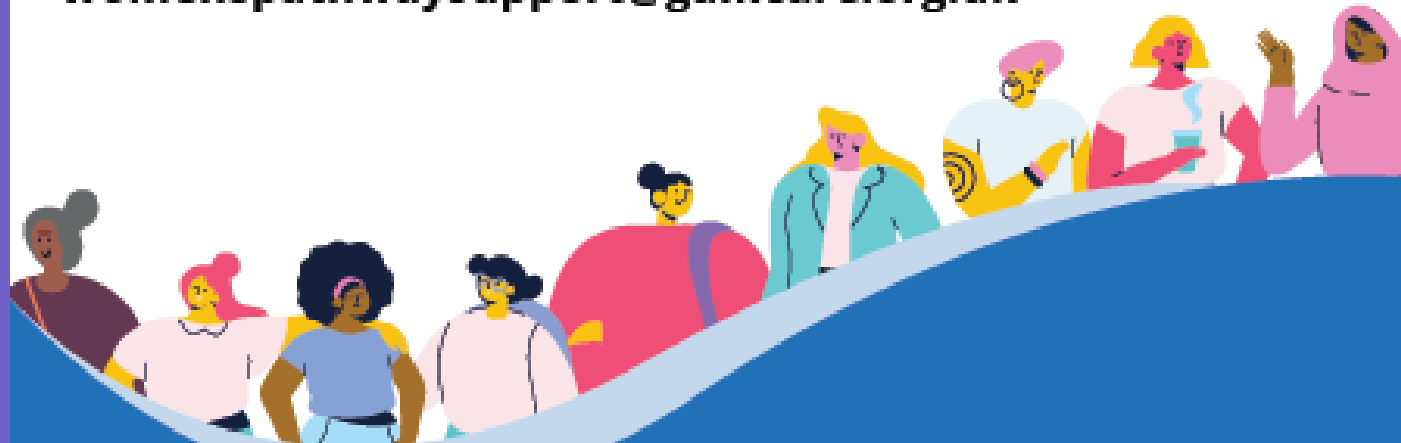
Sessions:

7-week online group meetings

Want to join Way Forward?

For more details, please contact:

womenspathwaysupport@gamcare.org.uk



If you're worried about yours or someone else's gambling, contact the National Gambling Helpline on:

Freephone: **0808 8020 133**

WhatsApp Chat: **0808 8020 133**

Live Chat: **gamcare.org.uk**

Our 24/7 Helpline provides a safe, confidential space to discuss options for support.

For our free training session information, contact Rod at **rod.smith@gamcare.org.uk** or look on the website at **www.gamcare.org.uk**